

The background is a vibrant, detailed illustration of a tropical jungle. It features several toucans with large, colorful beaks (yellow, orange, and red) and black bodies with white speckled chests. The birds are perched among lush green foliage, including large monstera leaves with characteristic holes and various types of palm fronds. Interspersed among the leaves are several hibiscus flowers in shades of yellow, red, and pink. The overall scene is dense and colorful, creating a sense of a rich, natural environment.

BUKIT 828

FREEHOLD RESIDENCES



Boutique Botanical Living

The exotic allure of the tropics. The elegance, style and sophistication of colonial life. All coming together to bring you a luxurious sanctuary designed for your utmost indulgence.

A PARADISE OF POSSIBILITIES.

A modern sanctuary created for you and your family, Bukit 828 is a world brimming with life - where many happy and lasting memories happen every day. It's a unique and colourful paradise of infinite inspiring possibilities.



Welcome to Bukit 828.
A rare, freehold residence in
the heart of Upper Bukit Timah
offering 34 limited edition
units composed of luxurious
1-bedroom + study to 4-bedroom
penthouse units.



Artist's impression

Elements of a contemporary paradise.



Atmosphere Pg 10, 11

Turn down the lights. Bring out the candles.
Time to take cosiness to the next level.

Comfort Pg 12, 13

Get comfortable. Take a break. It's all about relaxation. Breathe.

Shelter Pg 14, 15

This is where you belong. A place of peace and security.
The perfect place to call home.

Gratitude Pg 16, 17

Take it all in. This might be as good as it gets.
Live near everything that matters the most.

Presence Pg 18, 19

Shop at your favourite stores. Savour delectable cuisines.
Find prestigious schools nearby. Indulge.

Heritage Pg 20, 21

Where old world charm meets the present.
A place where time stands still. Escape away.

Pleasure Pg 22, 23

Have fun. Play to your heart's content. Do something new each day. Enjoy.

Togetherness Pg 24, 25

Build relationships and narratives. Remember all the
good times shared.

Peace Pg 26, 27

No drama. Only peace and quiet. Just you and the open sky.

Atmosphere

Turn down the lights.
Bring out the candles.
Time to take cosiness to
the next level.



Enter a modern paradise
created with your satisfaction
in mind. A unique world that
gives you the perfect setting
to cherish quality time spent
together with your loved
ones. Find contentment at
Bukit 828.



Type C2, Foyer

For illustration purpose only



Type C2, Living Room

For illustration purpose only



Type C2, Master Bedroom

For illustration purpose only

Comfort

Get comfortable.
Take a break. It's all about
relaxation. Breathe.



Discover a private sanctuary
thoughtfully crafted for your
ultimate comfort. Indulge in
the luxury of space like no
other. A sophisticated space
to suit your distinctive taste.



Type C2, Bedroom 2

For illustration purpose only



Type C2, Kitchen

For illustration purpose only

Shelter

This is where you belong.
A place of peace and
security. The perfect place
to call home.

Delight in a home that gives
you all the best of life's many
comforts with a functional
layout that offers practical
storage solutions such as
cabinetry provisions. Live
every day in a home that
pampers you and takes care
of you completely.



Type C2, Bath 2

For illustration purpose only



Type C2, Master Bath

For illustration purpose only



Type C2, Bath 2

For illustration purpose only

Revel in impressive fittings
and finishes known for their
quality and design. From
chic kitchen appliances to
deluxe bathroom fittings,
Bukit 828 lets you live
in style.

MRT



Just 5-mins walk to Cashew MRT Station and 7-mins walk to Bukit Panjang MRT Station.

Shopping Malls



Within 10-mins walk to Hillion Mall, Junction 10 and Bukit Panjang Plaza. Reach The Rail Mall and hillV2 in just 3 to 4-mins via drive.

Connectivity



Well-connected via major roads and expressways such as the Kranji Expressway and Bukit Timah Expressway.

Education



Find many prestigious preschools nearby such as EtonHouse Pre-School, Odyssey The Global Preschool, White Lodge, Blue House Nursery & International Preschool, Kiddiwinkie Schoolhouse, Pibo's Garden Playschool and Chiltern House Preschool.

Nature



Embrace nature with Chestnut Nature Park, Upper Peirce Reservoir, Dairy Farm Quarry, Singapore Quarry, Little Guilin and Bukit Timah Nature Reserve within the vicinity.

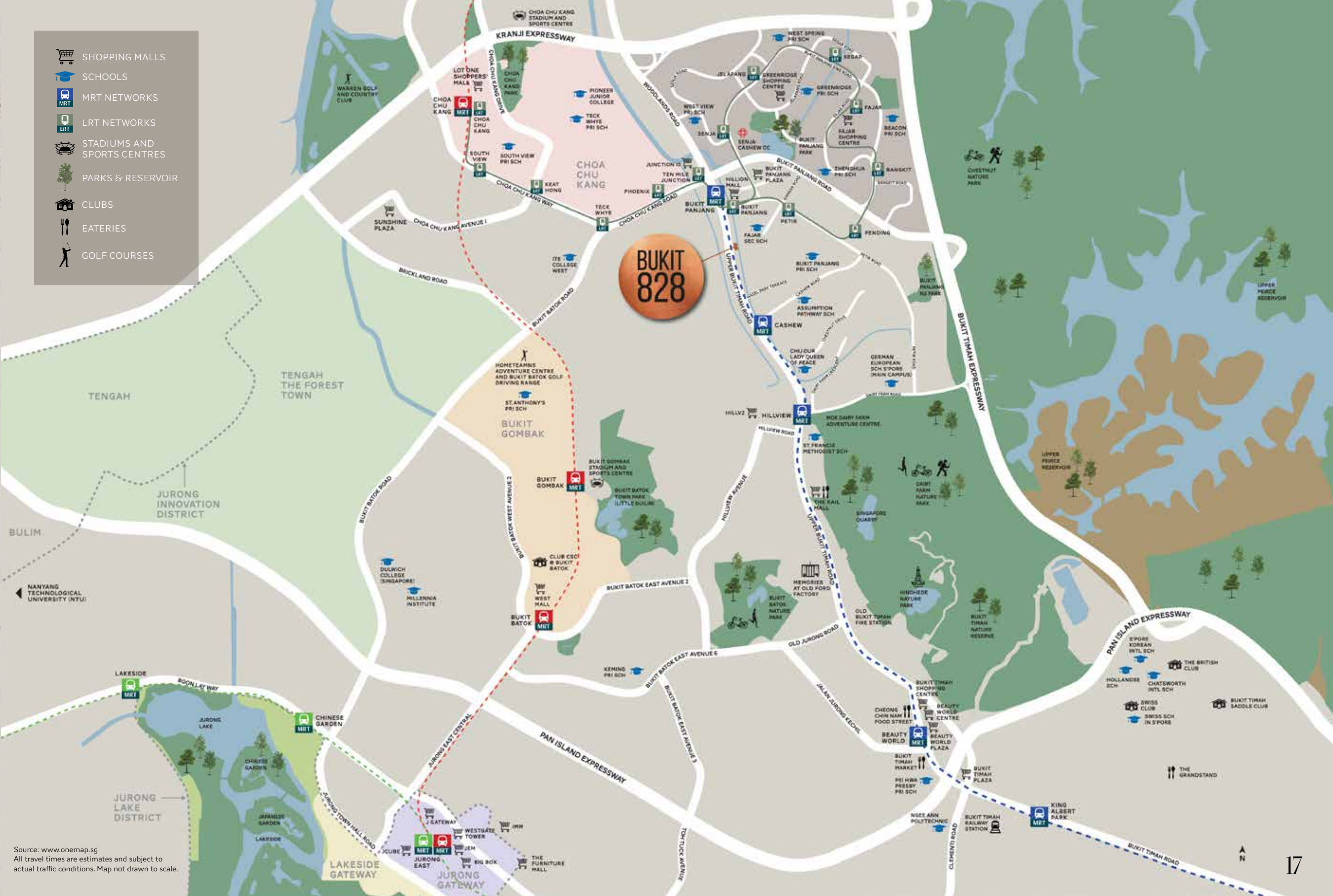
Gratitude

Take it all in. This might be as good as it gets. Live near everything that matters the most.



Nestled in Upper Bukit Timah Road, Bukit 828 is just 5 minutes away to the Cashew MRT station. Surround yourself with a host of nearby amenities where limitless fun awaits.

- SHOPPING MALLS
- SCHOOLS
- MRT NETWORKS
- LRT NETWORKS
- STADIUMS AND SPORTS CENTRES
- PARKS & RESERVOIR
- CLUBS
- EATERIES
- GOLF COURSES



Source: www.onemap.sg
All travel times are estimates and subject to actual traffic conditions. Map not drawn to scale.

Presence

Shop at your favourite stores.
Savour delectable cuisines.
Find prestigious schools
nearby. Indulge.



Enjoy every moment as you
experience a world of fun and
excitement with many shopping
and dining amenities to choose
from. Live close to many
excellent schools that take care
of your child's educational needs.



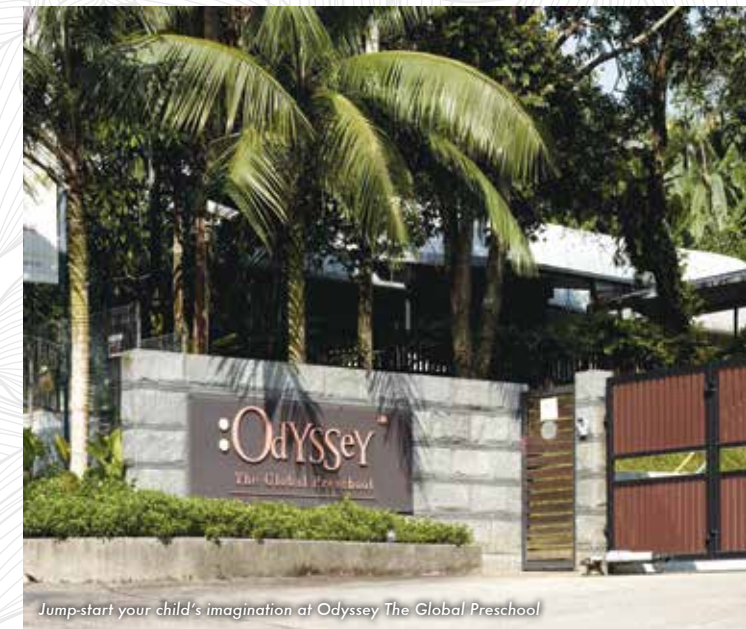
Endless shopping finds at Hillion Mall



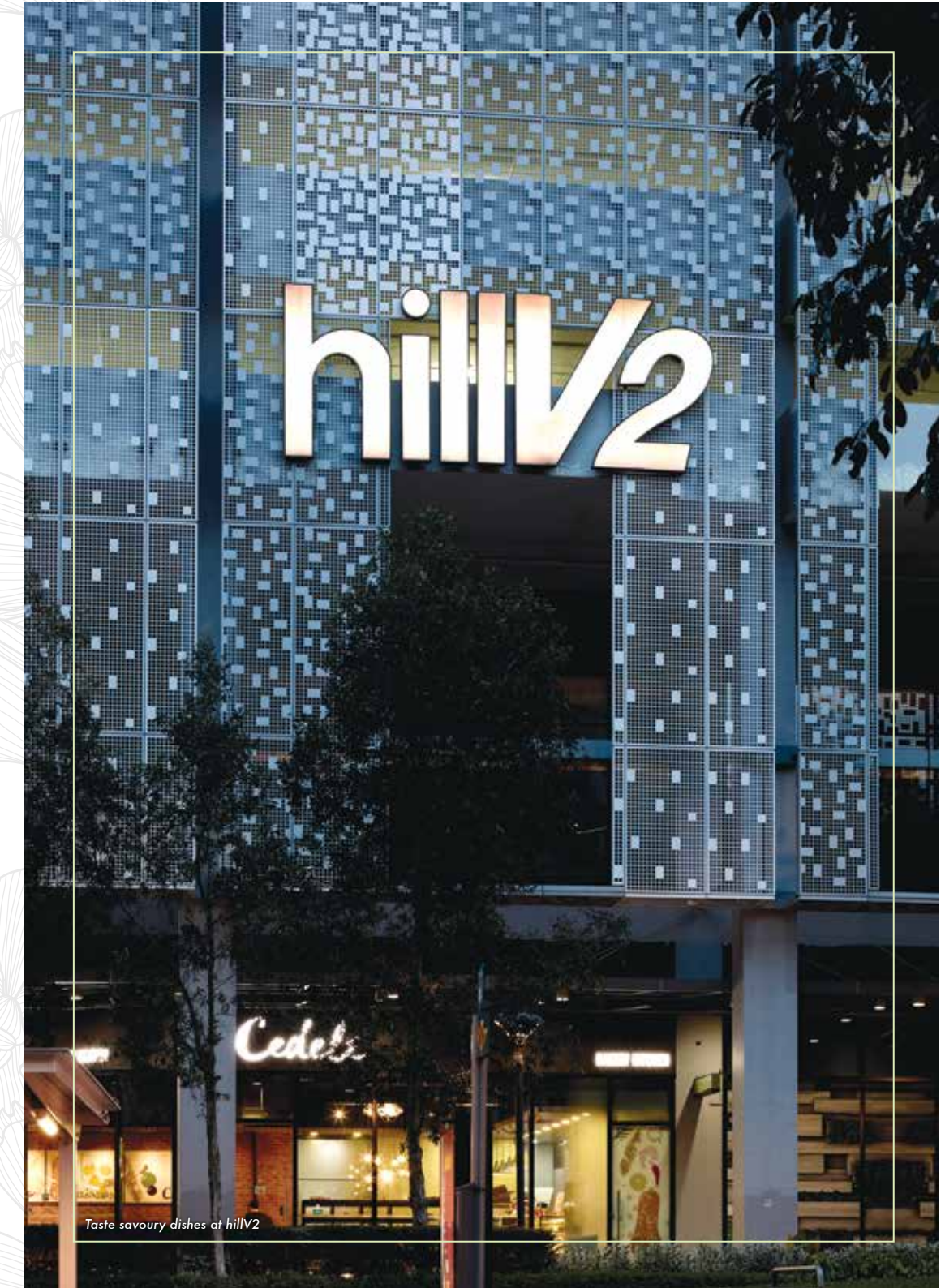
Fun learning at EtonHouse Pre-School



Enjoy great deals at Junction 10



Jump-start your child's imagination at Odyssey The Global Preschool



Taste savoury dishes at hillV2



Heritage

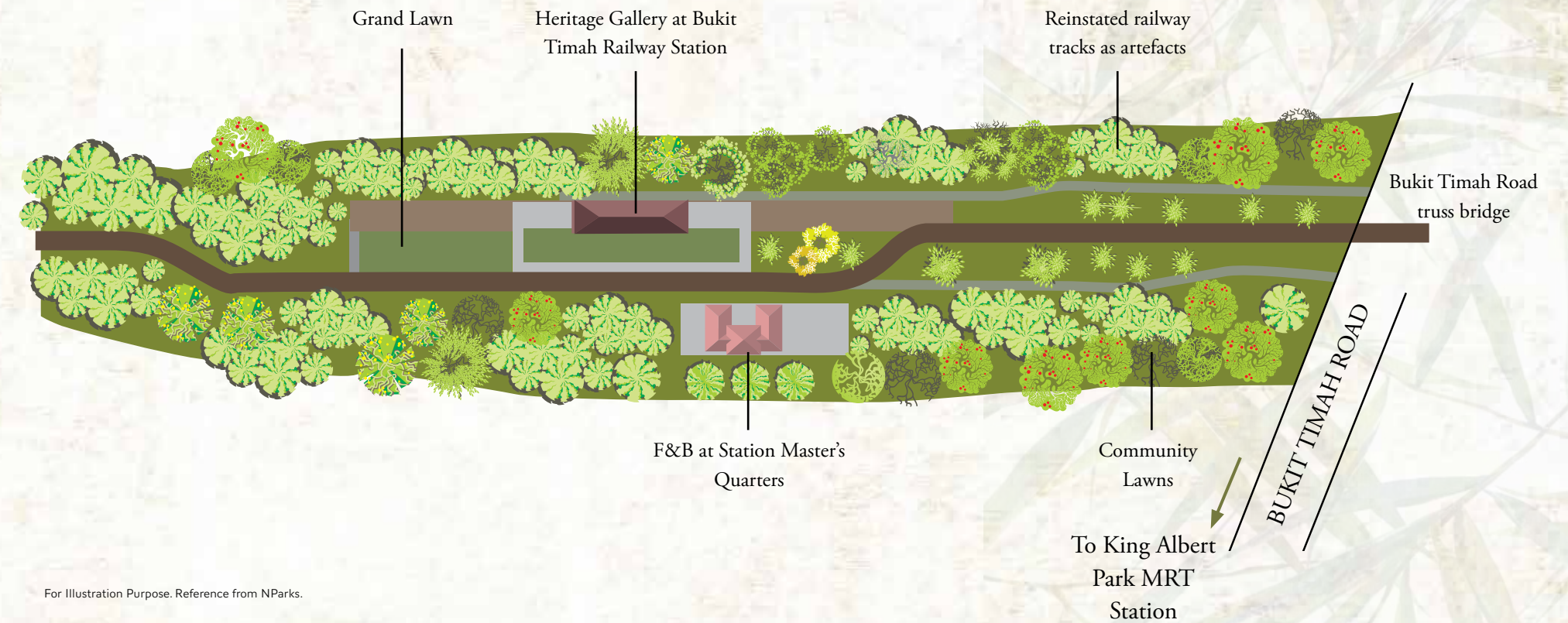
Where old world charm meets the present. A place where time stands still. Escape away.

At Bukit 828, become one with nature as you explore the Bukit Timah Railway Station and a lush nature park network filled with trees and rich plant life.



Go hiking at Bukit Timah Rail Corridor.

Just a stone's throw away from Bukit 828 is The Rail Corridor (Central), which stretches and extends to the northern and southern part of Singapore. Within The Rail Corridor is the future Bukit Timah Rail Station, which will be revitalised into a distinctive community node, that will highlight its heritage, as well as offer various spaces for the community. Look forward to a new community lawn for leisure activities, F&B site in the existing station master's quarters and heritage gallery in the current train station.



For Illustration Purpose. Reference from NParks.

Pleasure

Have fun. Play to your heart's content. Do something new each day. Enjoy.

Find adventure wherever you go at Bukit 828. Now is the perfect time to be active and experience a great selection of activities for your enjoyment.

Try horse riding at Gallop Stables



Have endless fun at The Grandstand

In the mood for some serious fun? Keep that adrenalin rush pumping as you speed through a challenging go-kart racing course.



Mountain bike from Dairy Nature Reserve up to Bukit Timah Nature Reserve



Enjoy the great outdoors as you take pictures of beautiful flora and fauna.



Explore the world around you as you take an exhilarating hike amidst nature's presence.



Hike at Chestnut Nature Park and more



Riders Cafe



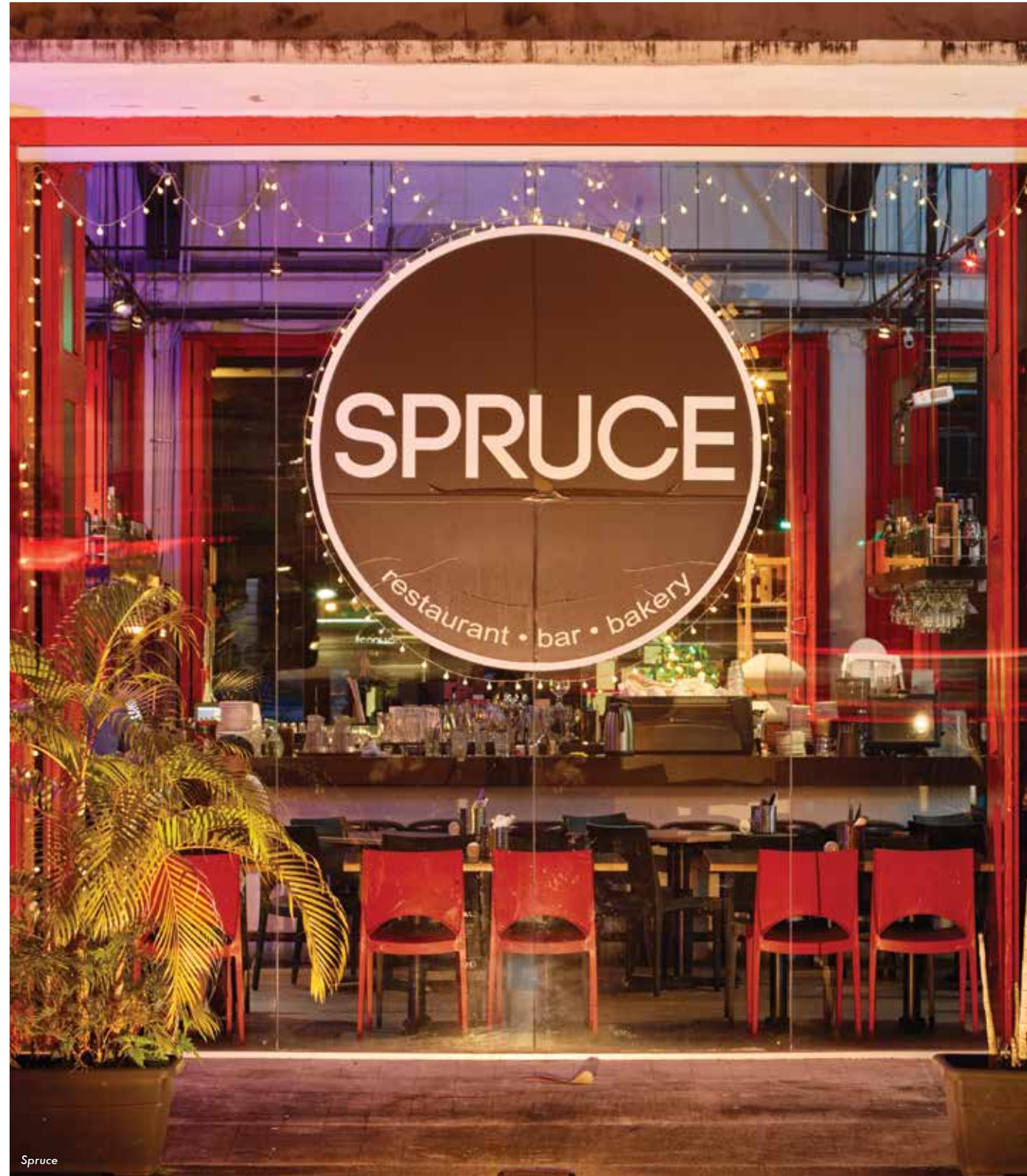
Italian Osteria at hillV2

GarHock Eating House

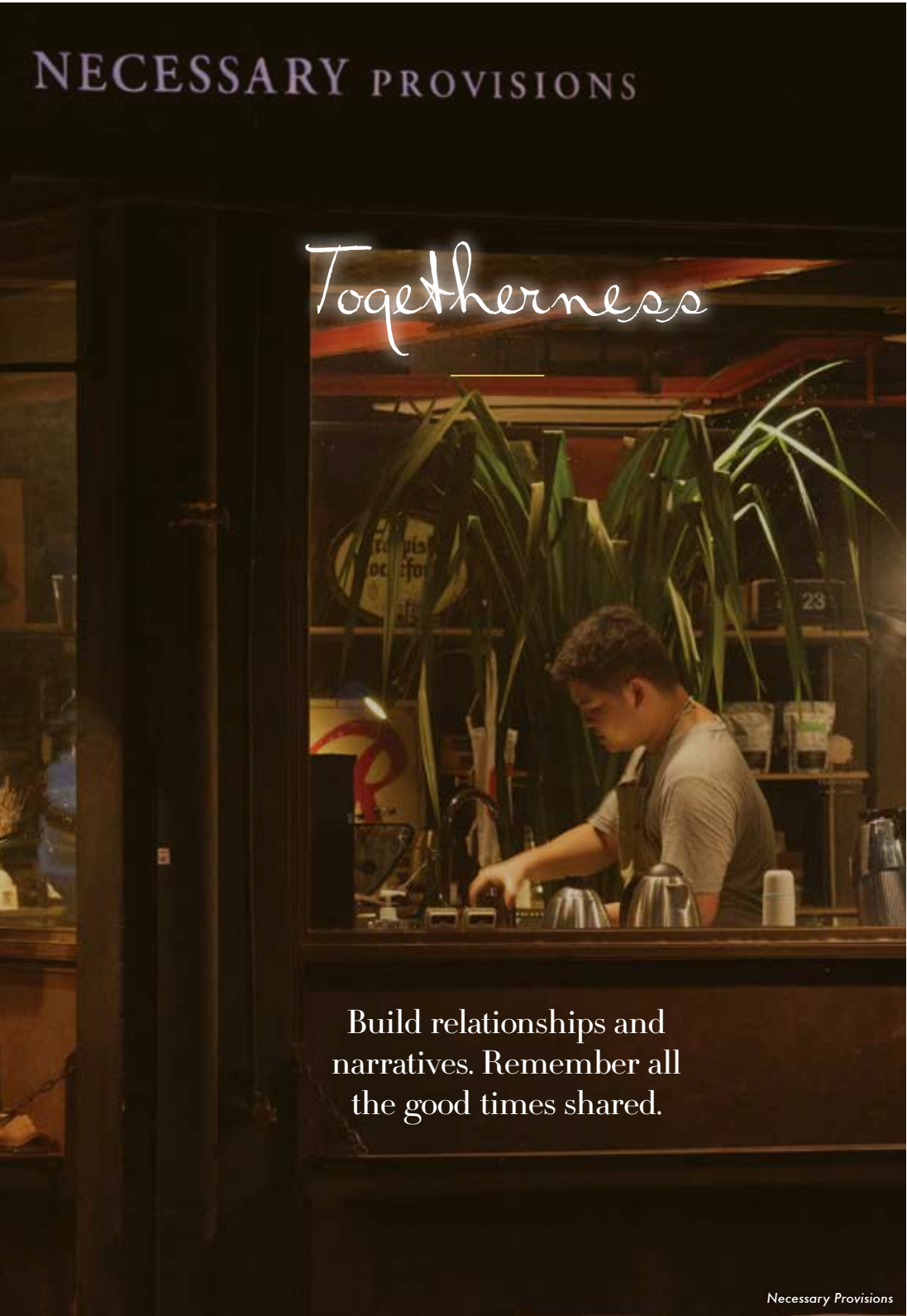


Riders Cafe

Necessary Provisions



Spruce



Build relationships and narratives. Remember all the good times shared.

Necessary Provisions



Carpenter and Cook



Carpenter and Cook

Riders Cafe

Imagine a place that gives you the chance to create lasting connections. Where days are filled with worthwhile moments and conversations spent with people who matter the most.



Italian Osteria at hillV2

Peace



No drama.
Only peace and quiet.
Just you and the open sky.



Artist's impression



Artist's impression

Unwind in your very own luxurious rooftop infinity pool for your exclusive pleasure.
Get to soothe your senses completely. Bathe in tranquility beyond compare.

1 BEDROOM + STUDY

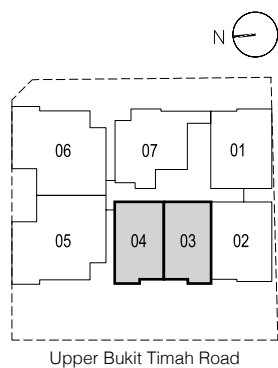
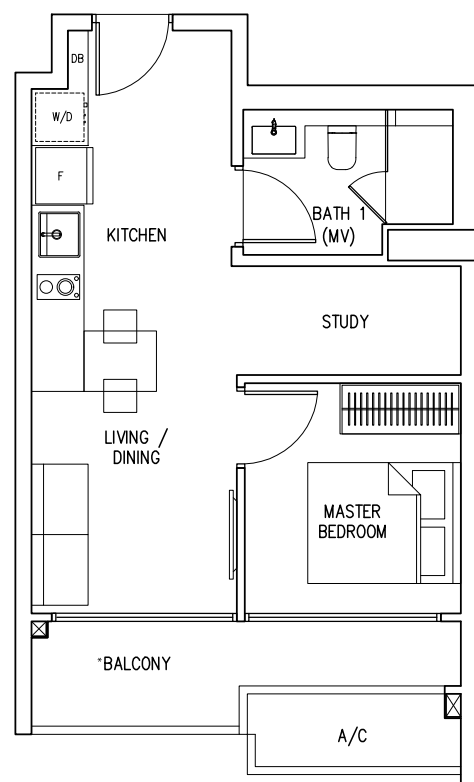
Type A1 Unit



Area 47 sqm

#02-03 TO #05-03

#02-04 TO #05-04 (Mirror Image)



All plans are subjected to amendments as approved by the relevant authorities. Floor areas are approximate measurements and are subject to final survey. Plans are not drawn to scale and do not form part of the contract.

*The balcony shall not be enclosed. Only approved balcony screens are to be used. For illustration of the approved balcony screen, please refer to page 34 of this brochure.

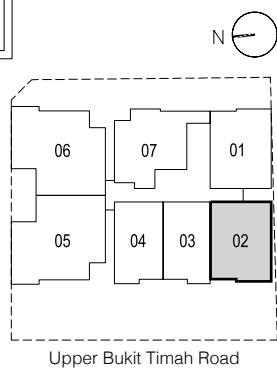
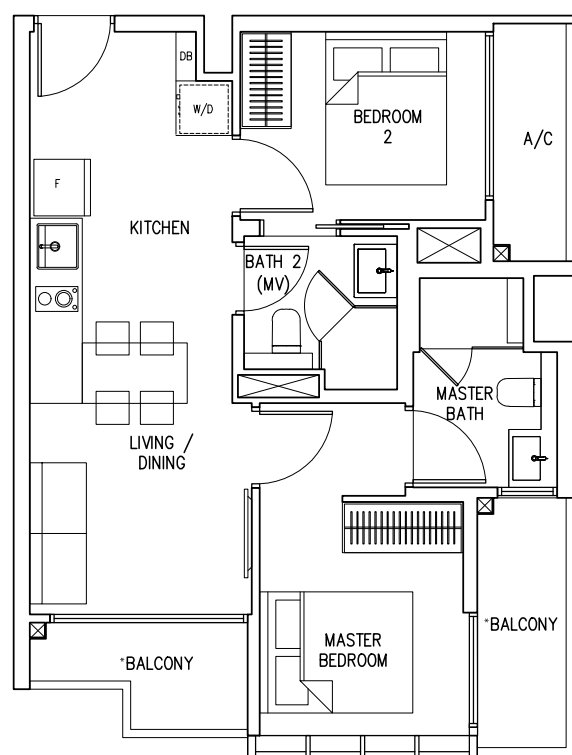
2 BEDROOM ENSUITE

Type B1 Unit



Area 58 sqm

#02-02 TO #06-02



All plans are subjected to amendments as approved by the relevant authorities. Floor areas are approximate measurements and are subject to final survey. Plans are not drawn to scale and do not form part of the contract.

*The balcony shall not be enclosed. Only approved balcony screens are to be used. For illustration of the approved balcony screen, please refer to page 34 of this brochure.

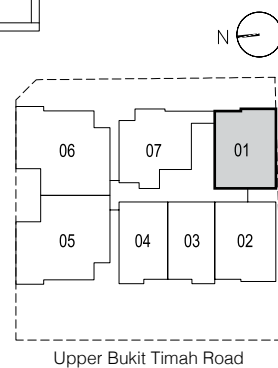
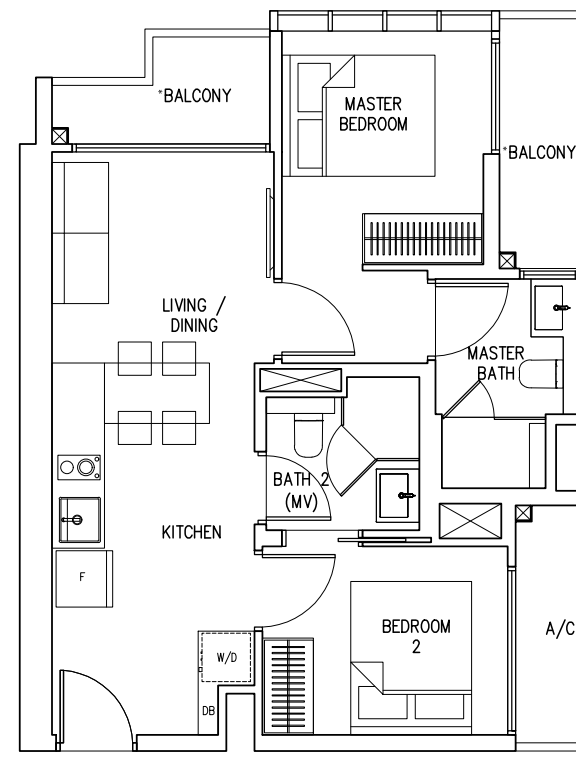
2 BEDROOM ENSUITE

Type B2 Unit



Area 59 sqm

#02-01 TO #06-01

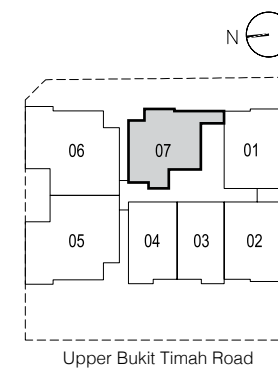
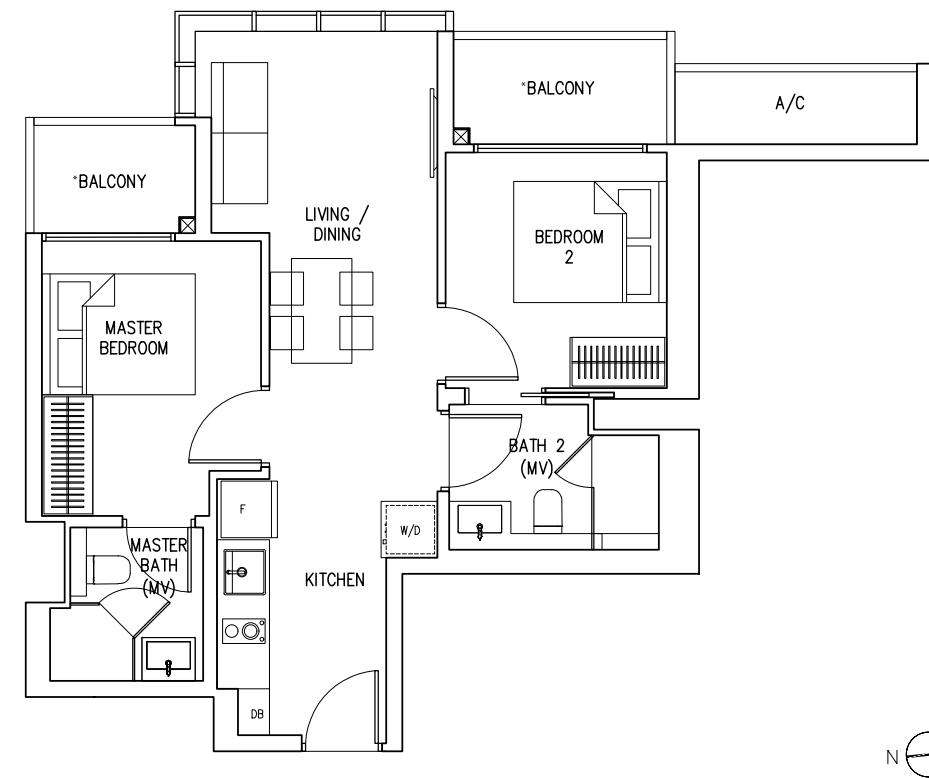


Type B3 Unit



Area 63 sqm

#02-07 TO #06-07



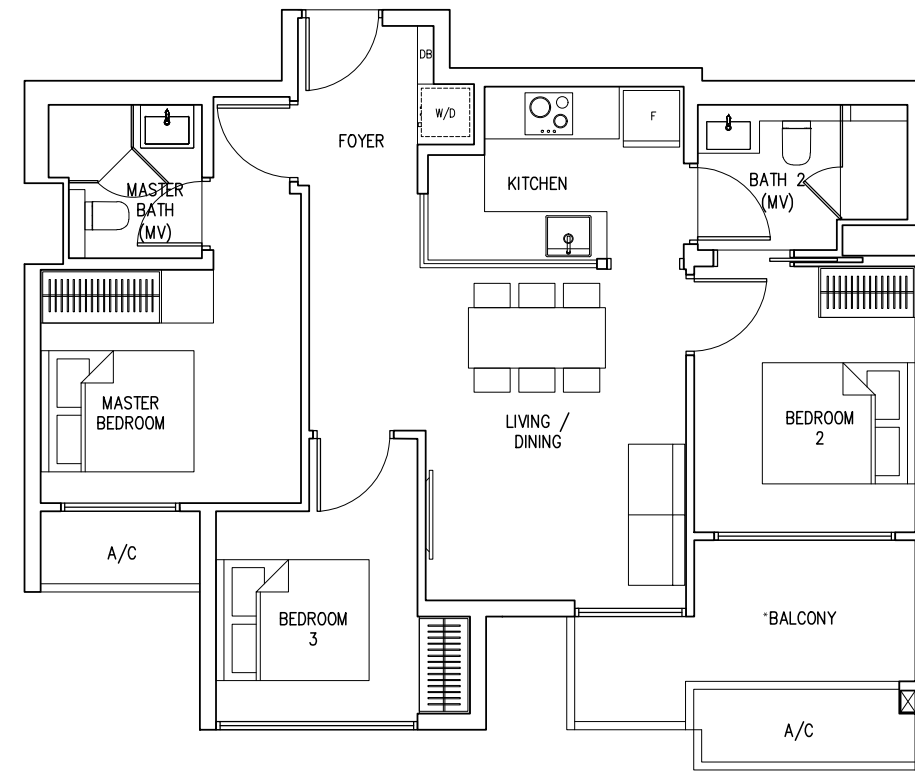
3 BEDROOM

Type C1 Unit



Area 85 sqm

#06-03



3 BEDROOM + UTILITY

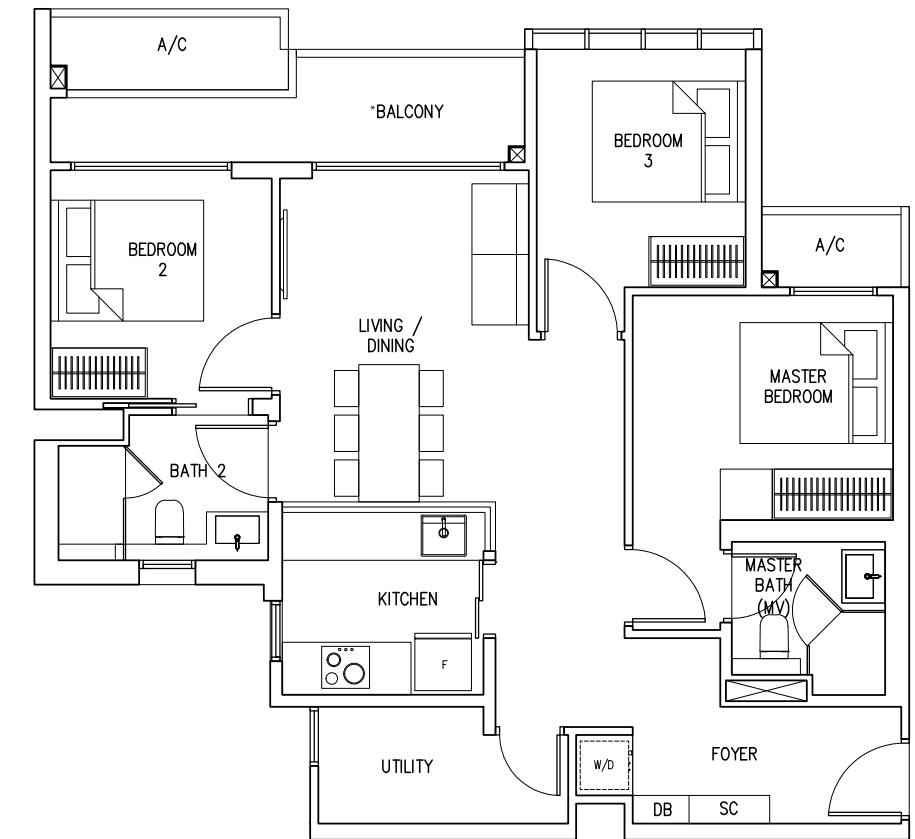
Type C2 Unit



Area 91 sqm

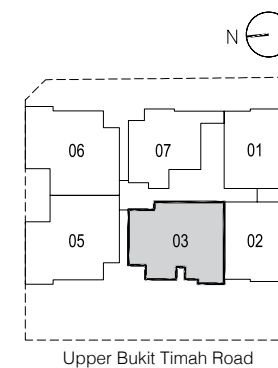
#02-05 TO #05-05 (Mirror Image)

#02-06 TO #05-06



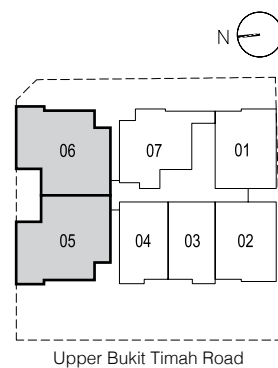
All plans are subjected to amendments as approved by the relevant authorities. Floor areas are approximate measurements and are subject to final survey. Plans are not drawn to scale and do not form part of the contract.

*The balcony shall not be enclosed. Only approved balcony screens are to be used. For illustration of the approved balcony screen, please refer to page 34 of this brochure.



All plans are subjected to amendments as approved by the relevant authorities. Floor areas are approximate measurements and are subject to final survey. Plans are not drawn to scale and do not form part of the contract.

*The balcony shall not be enclosed. Only approved balcony screens are to be used. For illustration of the approved balcony screen, please refer to page 34 of this brochure.



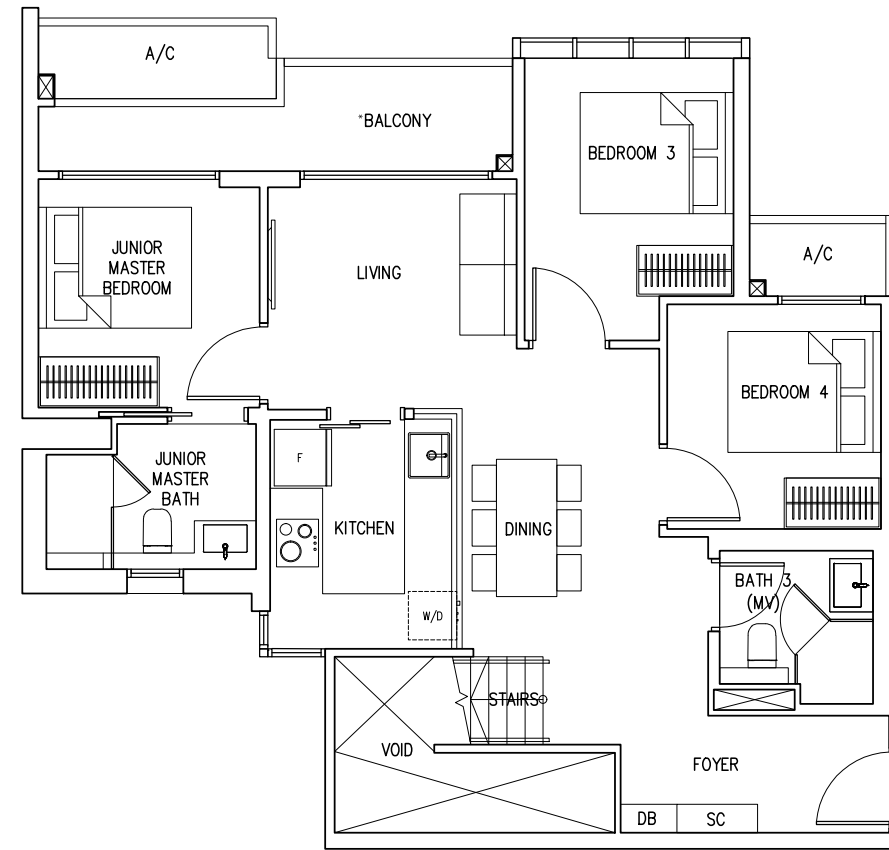
4 BEDROOM PENTHOUSE

Type D Unit

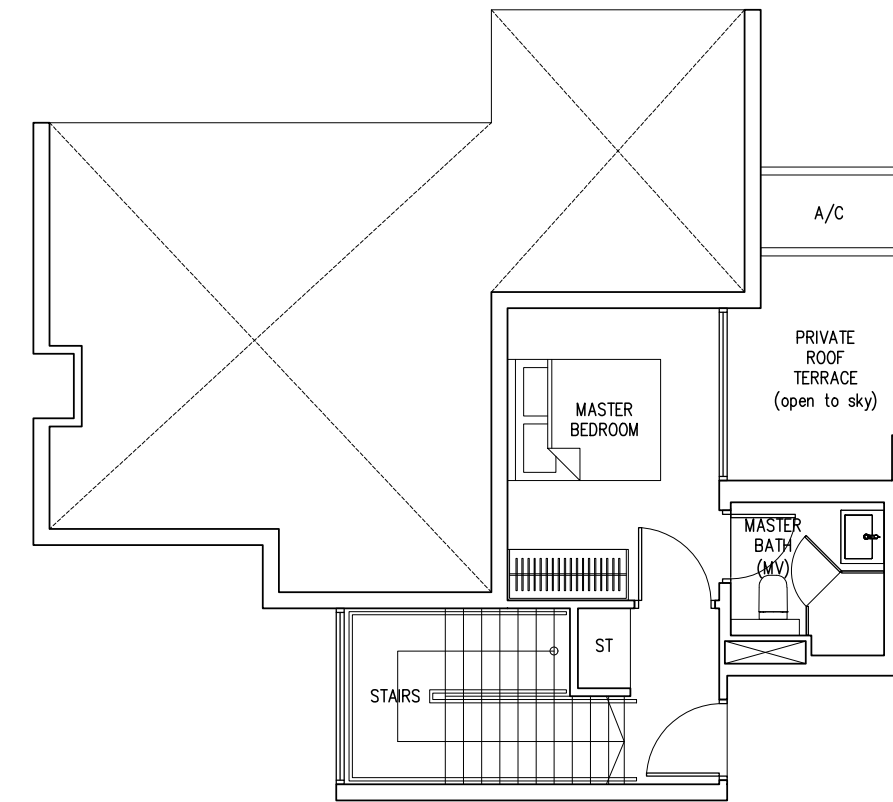


Area 124 sqm

#06-05 (Mirror Image)
#06-06



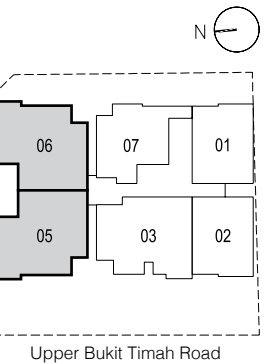
Lower Floor



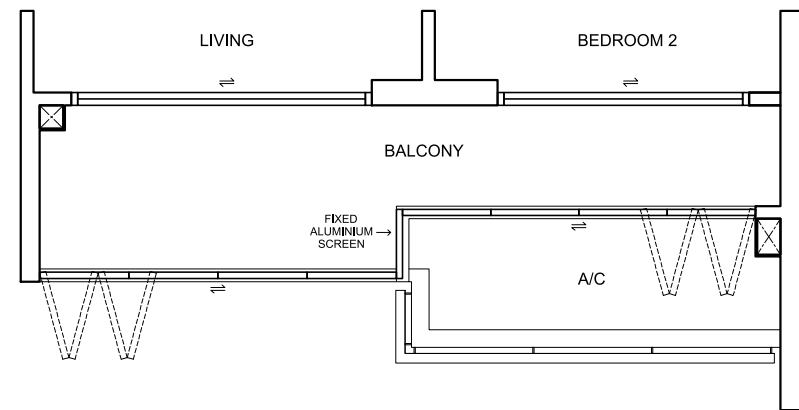
Upper Floor

All plans are subjected to amendments as approved by the relevant authorities. Floor areas are approximate measurements and are subject to final survey. Plans are not drawn to scale and do not form part of the contract.

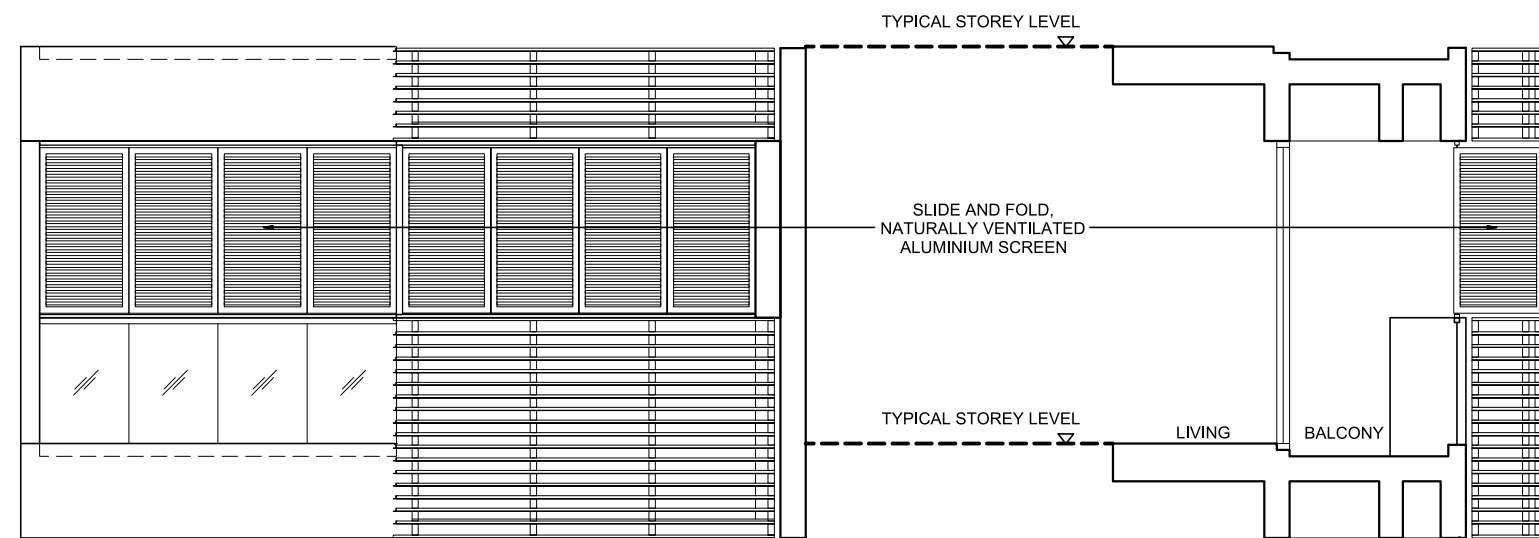
*The balcony shall not be enclosed. Only approved balcony screens are to be used. For illustration of the approved balcony screen, please refer to page 34 of this brochure.



BALCONY SCREEN



PLAN



FRONT ELEVATION

SECTION

This drawing is for reference only. The screen design is provided for aesthetic uniformity of the development. Materials to be aluminium with powder coated finish. Fixing details are by contractor, and fixing shall not damage the existing waterproofing and structure. Owner shall verify all dimensions prior to fabrication and commencement of works. Drawings are not to scale. The cost of screen and installation shall be borne by the Owner.

*A Smarter
Home*

Control your home
remotely. This is
convenience at its best.
Find peace of mind at last.



Every home at Bukit 828 is equipped with a Smart Home Gateway, which allows you to be in control of your home remotely, so that you and your family can always enjoy peace of mind. This Smart Home Gateway is fully expandable to other smart home devices. For your ultimate safety, every home comes with a Smart Lockset and WiFi Camera with built-in features such as Night Vision, Motion Detection, Cloud Storage for Video Recording and Alarm Notification.



*A Premier Development by
Roxy-Pacific Holdings Limited*



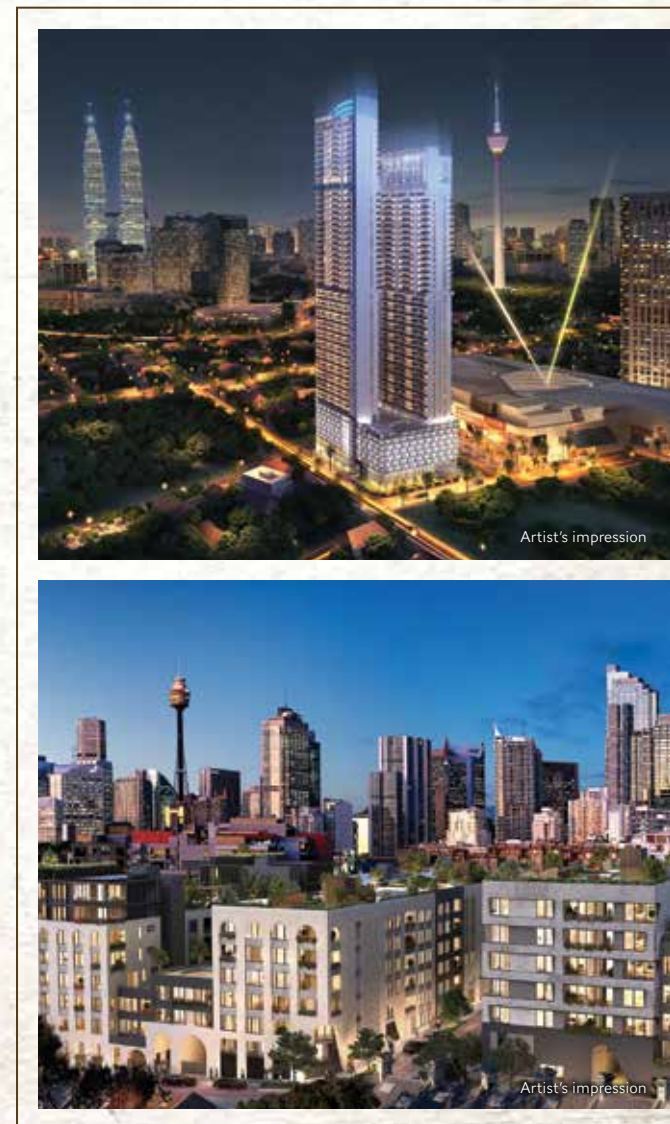
Roxy-Pacific Holdings Limited ("the Group") is an established property and hospitality corporation with an Asia-Pacific focus and a track record dating back to May 1967. Listed on the SGX Mainboard since 12 March 2008, the Group is engaged primarily in the development and sale of residential and commercial properties ("Property Development"), Hotel ownership and other investment properties in Asia-Pacific ("Hotel Ownership and Property Investment"), including the ownership of Grand Mercure Singapore Roxy. Since 2013, the three main arms - Property Development, Property Investment and Hotel Ownership have extended their reach beyond Singapore, to countries such as Malaysia, Australia, Thailand, Japan and Maldives.

Singapore

Overseas



120 GRANGE • City living uniquely curated for life's finest indulgence
HARBOUR VIEW GARDENS • A home that cradles holistic living
STRAITS MANSIONS • A freehold Peranakan heirloom
THE NAVIAN • A freehold address of infinite potential



WISMA INFINITUM, MALAYSIA
Residence • Retail • Club
WEST END RESIDENCES AUSTRALIA
A collection of unique apartments and terrace homes in the heart of Glebe



Developer: RH CAPITAL PTE. LTD. (201634033R) • Developer's Licence No.: C1243 • Tenure of Land: Freehold • Encumbrances: Mortgage(s) in favour of Oversea-Chinese Banking Corporation Limited • Expected Date of Vacant Possession: 30 June 2022 • Expected Date of Legal Completion: 30 June 2025 • Location: Lot(s) 99979X, 99980K, 99981N, 99982X & 99983L MK 14 at 828 Upper Bukit Timah Road

Whilst every reasonable care has been taken in preparing this brochure, the Developer and its agents shall not be held responsible or liable for any inaccuracies or omissions. All statements are believed to be correct but shall not be regarded as statements or representations of fact. All information and specifications are current at the time of print and are subject to change as may be required without prior notice. Nothing herein shall form part of any offer or contract. Visual representations including models, drawings, illustrations, photographs and art renderings portray artistic impressions only and are not to be taken as representations of fact. Floor areas and other measurements are approximate only and are subject to final survey. The Developer shall not be bound by any statements, representations or promises (whether written or oral) by its agents or otherwise, except as expressly set forth in the Sale and Purchase Agreement. The Sale and Purchase Agreement shall form the entire contract between the Developer and the Purchaser and shall supersede all statements, representations or promises (whether written or oral) made prior to the signing of the Sale and Purchase Agreement and shall in no way be modified by any statements, representations or promises (whether written or oral) made by the Developer and its agents unless approved by the Controller of Housing (if required) and expressly agreed to in writing between the parties.

